



woodlands
site services ltd

AMS TEMPS ELECTRICAL &
MECHANICAL SETUP

INTRODUCTION



GRP Enclosures



SEL Protection
Devices



Semi Permanent
Installations



Traceability



Plug & Play
System



Heating &
Dehumidifying



Water Mains
Setup

GRP ENCLOSURES

- Used for housing SEL Protection Devices
- Permits safer testing and inspection
- Inhibits unauthorised entrance (LOA)
- Environmental Protection



SEL PROTECTION DEVICES

- SEL (Safety Earth Leakage)
- Set at 1000mA & 300ms feeding onto Site MDU
- Internal site MDU set at 500mA giving discrimination between protection devices.
- Specially designed and adapted by the manufacture on internal switches and staggered termination points to handle cables more comfortably.



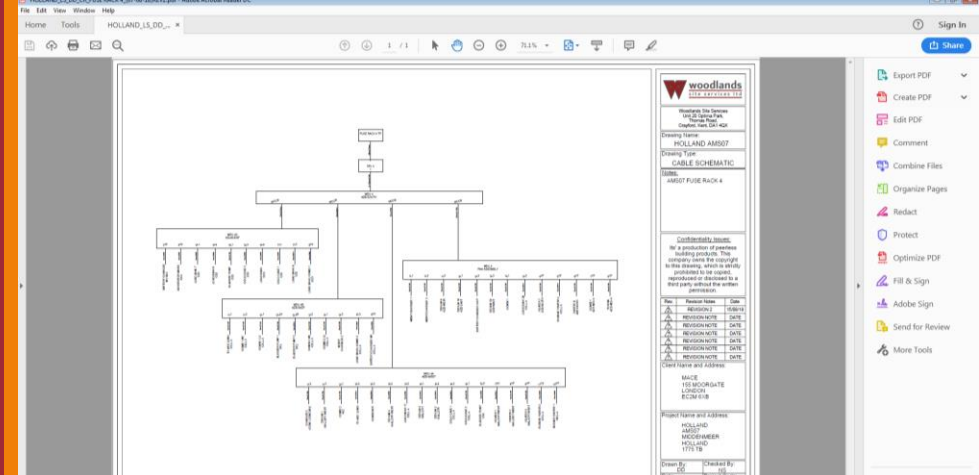
SEMI PERMANENT INSTALLATION

- To meet current and future high standards expected for a safe install.
- Cables clearly identified
- Utilise ladder racks where possible
- Extra earth bonding on ladder racks
- Danger/safety signs visibly shown



TRACEABILITY

- Cables and circuits are clearly marked
- Schematic/single line drawings
- Visible isolation point.
- Testing and inspection at 3-month intervals signed off and recorded.



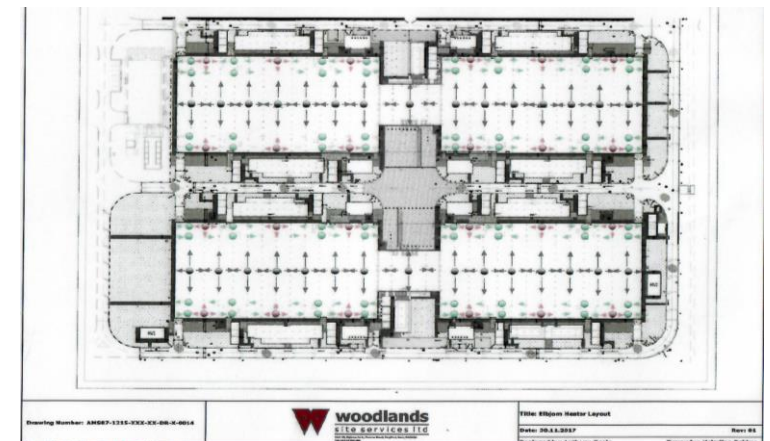
PLUG & PLAY SYSTEM

- Introduced 2 years ago, a much more easy and flexible approach as you do not need to isolate a complete MDU to add or remove circuits.
 - Reduce downtime (isolation)
 - Maintenance & Strip Out
 - Reduce risks and Improve safety standards.
- Extra safety with R.C.B.O protection on all 230v single phase & 400v 3-phase circuits protected by 30mA RCBOs.
- 3-phase protection devices are neatly installed within IP enclosures adapted onto our MDUs c/w contactors & Time clocks for lighting as part of our energy control.
- Lock out kits to the sockets outlets on plug & play.
- Lock out tag out (LOTO) procedures as per client requirements.



EL BJORN HEATING & DEHUMIDIFYING

- 24/7 Monitoring AZ & SB buildings to protect permanent Panels/Switchgear from condensation.
- Client user interface via EZE control electronic monitoring system.



WATER MAINS SETUP

- Subjected to site requirements we utilise 50mm incomer, reducing to 32mm and 25mm.
- Heat tracing to all above ground exposed pipe work entry points.
- All pipe work double lagged or depending on extreme weather conditions triple lagged sleeving.
- Depending on distances we also use inline booster pumps to ensure correct pressure is maintained.

